

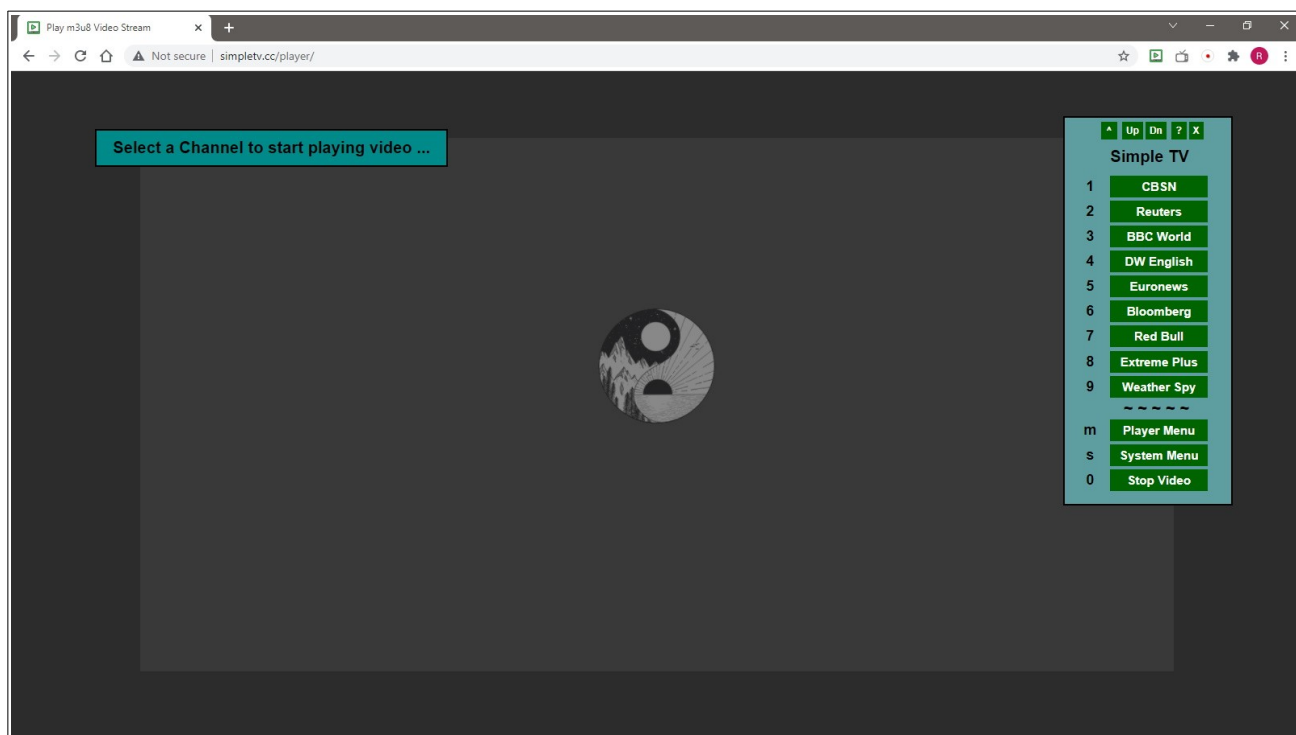
## Introduction to SimpleTV.cc/player

This document is a short introduction to the SimpleTV.cc live video stream (HLS/m3u8) player web page. It is a web hostable portion of a standalone desktop application I have been developing and using. Although it has more limited stream (channel) access and configurability than the full application, it is still quite usable and useful to be able to access the program from anywhere “as-is”. It is designed mainly for desktop/laptop use. It does not work on iPhone; works in Opera on Android 9 Smart TV (single channels). Mac users: does not work in Safari but does work in Chrome, or try other browsers.

I use it mostly to view live news streams from well known channels, but links to other types of streams are also included, including some general interest and foreign language channels. As the publicly available streams do sometimes change or are discontinued, it is possible that some of the streams could perform poorly or stop working altogether. I will update the stream links from time to time so you will likely see some channels be removed and others added as appropriate. See below on how to see more channel lists.

So, if you are interested in using the program, just browse to <http://simpletv.cc/player> to start viewing the provided channel streams. I prefer to use Chrome (or Brave) browsers; the web page should work in other browsers as well, but some details of the behavior will most likely vary.

So, let's get started! Once the page loads, the browser page will look like this:



The main components of the web page are a message box, the video element, a few images, and the system's menu. This menu is used to select most of the desired actions.

From the “Menu Home”, as displayed in the image above, you can select the channel you would like to watch by clicking its button with the mouse or using the 1-9 number keys as shown to the left of each channel name. To stop viewing a running video, select “Stop Video” from the menu or press the 0 (zero) number key.

For example, if you select to view the “Reuters” channel, the player will look like this:



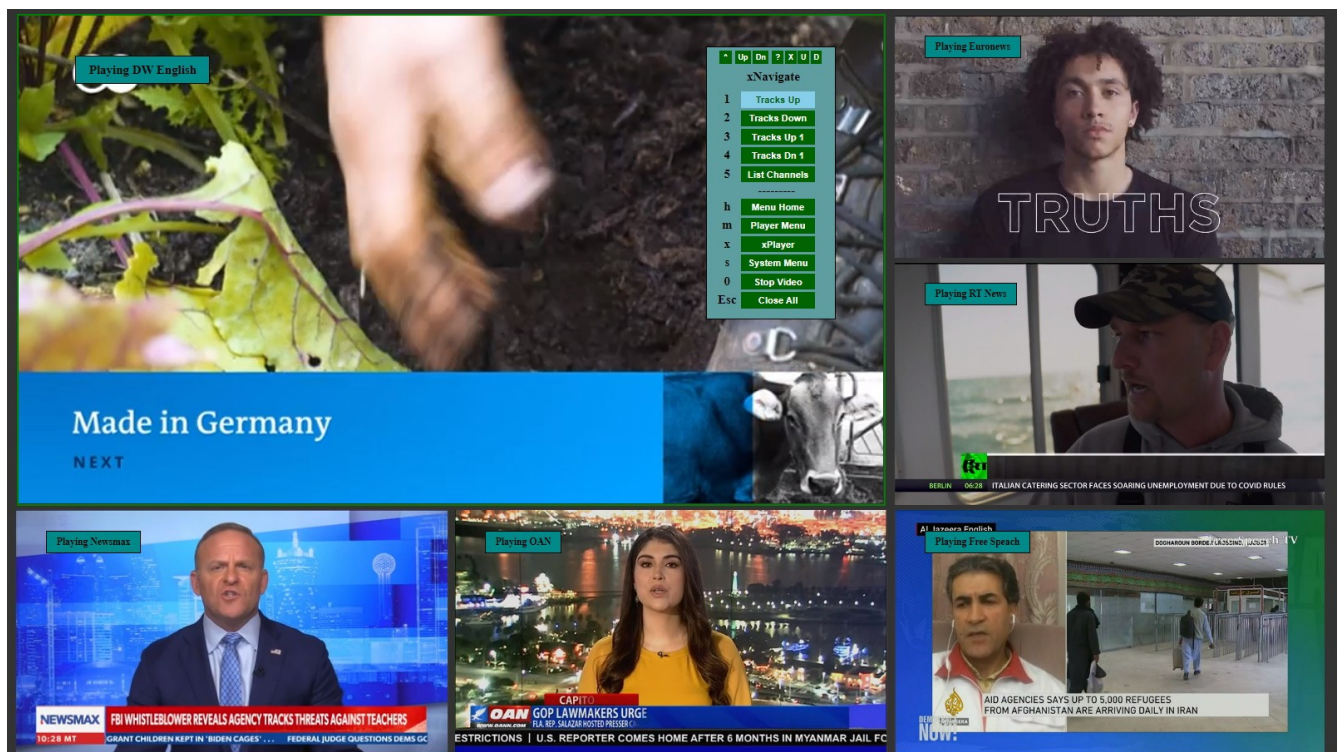
The Menu (and messages) will disappear on their own once the video starts playing, so to access the menu again you can either use the mouse to right-click the video area or press the Enter (Return) key. Use backspace to hide the menu or Esc to close all videos.

At the top of the menu there are some small buttons (unless the are disabled) that provide several quick access options using the mouse. For example, the ^ button will reset the menu to its “Menu Home”, the Up & Dn buttons will show the previous and next menu pages to view other available channels, etc. You can hover the mouse over most menu buttons to get a brief description of their functionality. You can also use the Home, Page Up, and Page Down keys to scroll through the menu’s channel pages.

At the bottom of the menu, after the separator (“---” or “~~~”), are mostly options to show player and system related menus (not channels), or options to stop playing videos (either the current video, or all videos if multiple channels are playing at once).



One of the functions I like most about this player is the ability to play multiple channel streams simultaneously. The following two images show this functionality:



OK, so you get the idea! But let's start with more of the basic options needed to view a single video at a time. It is important to distinguish that various functionalities are offered by the computer system (Windows), others by the web browser (Chrome / Brave / Firefox), and finally we have the functionality performed by the web page itself.

**Adjusting the volume and muting:** Those familiar with playing internet video streams will know that there are two different volume levels which can be set independently (can be confusing to some users!), There is the computer (Windows) volume and the video's own volume which can be controlled separately. For most users the easiest thing to do is to use only the system's volume (and mute) and leave the video's volume alone. You would do that using the system's sound control icon in the (Windows) taskbar, or if your keyboard has media keys (or you use a remote control) those are even easier. To adjust or mute the video's own volume, use the menu options or the up and down arrow keys.

**Browser, video size, and zoom:** To change the entire browser window (not just the currently playing video) in and out of full screen mode you should use the F11 key. To view the currently playing video in full screen, double click on it or select the Fullscreen option from the Player Menu. When playing a single video, the default is to leave a border area around it so it doesn't actually fill the entire screen. You can control the size of the video (and its border) by using the “[“ and “]” keys or using the System Menu. Finally, the default display size of the messages and menus is rather large. You can reduce (or increase) their size easily using the browser's menu (not the player's menu) zoom options or corresponding keys (Ctrl – or + in Chrome). If a video won't play, use the F5 key to reload the browser page. If it still fails, choose a different channel stream.

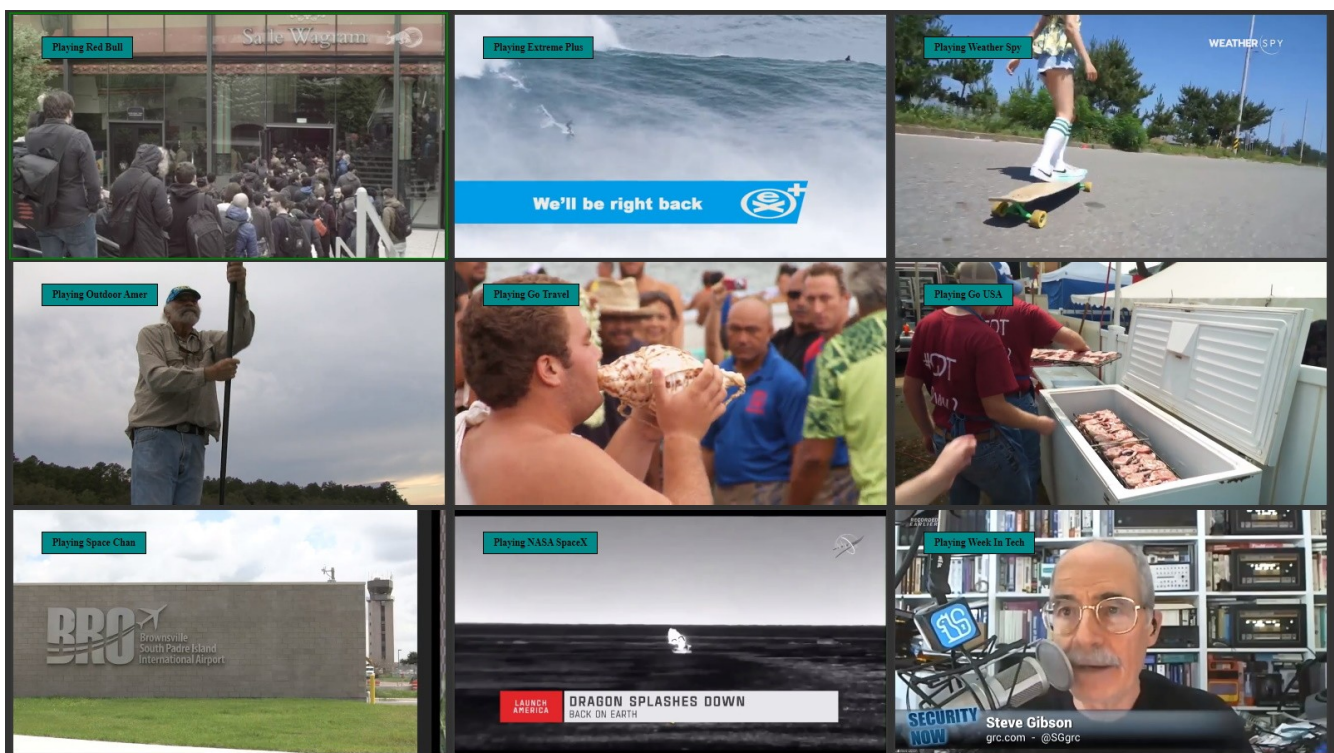
**Viewing more channels with Channel Lists:** The default channel list (Simple TV menu) shows a quite limited number of channels. To see more available channels you can select a different Channel List. To do this select the System Menu and then the Channel Lists option. From there you can select a different channel list. The Simple TV list is the default (limited) list. The next option is the Stream TV list, which I maintain as a more comprehensive channel list of the most reliable channel streams. I would recommend the Stream TV list for use most of the time. Finally, you can also select the Sorted Index channel list, which is a complete sorted list of all the available channels.

**Channel Sources and Users:** You can also explore channels from specific sources using the System Menu and then Channel Sources option. There are also additional channel lists and sources which can be defined for specific users. You can explore those using the System Menu and Users Menu option. Since this is the online, web hosted version of the program no additional configuration additions or changes are possible, they must be done directly on the server or using the standalone desktop application.



**Playing multiple videos simultaneously:** To start playing multiple videos you need to access the xPlayer Menu. You can do that by pressing the “x” key, or selecting the “Player Menu” and then “xPlayer Menu” options from the bottom of the menu. Then, from the xPlayer Menu, select the X1, X4, X6, X9, etc. option to play the corresponding number of videos (you will need a somewhat fast computer and internet connection to play more than a few videos at a time!). The videos will be displayed in the order of the channels as specified in the “Stream TV” menu (the “Menu Home”), but you can then select different specific channels for each video frame/window, or you can navigate all the video frames simultaneously using the “Tracks Up” or “Tracks Down” options from the “xNavigate Menu” which is available from the mentioned “xPlayer Menu”. That’s a bit complicated to explain, but if you try it out and get familiar with the menus, it shouldn’t be too hard to see how it works... If not, just view single channels!

That should be enough information to be able to get started! Remember that the program is still under development, so some things might not always work as expected or be completely self explanatory. I’m still working on simplifying things as much as possible.



**Resetting All Options to Defaults:** The player’s menus have many options, a few of which are meant for use with the full desktop application and will not function from the web page, but you can explore and try everything that is there if you like. However, if you start changing many options and would like to reset everything to the original default settings, go to the System Menu, then to the Users Menu and select the Default user. This will reset all the player’s options to their original default user settings.

Want to hunt for other m3u8 video stream links? Visit the [m3u8 Sniffer](#) Chrome Extension on Google Store for info.

I hope you enjoy and find the program useful! If you have any questions, problems, comments, or suggestions, feel free to contact me and let me know.

Happy Streaming!!!

Rick Stam  
rickstam@simpletv.cc

